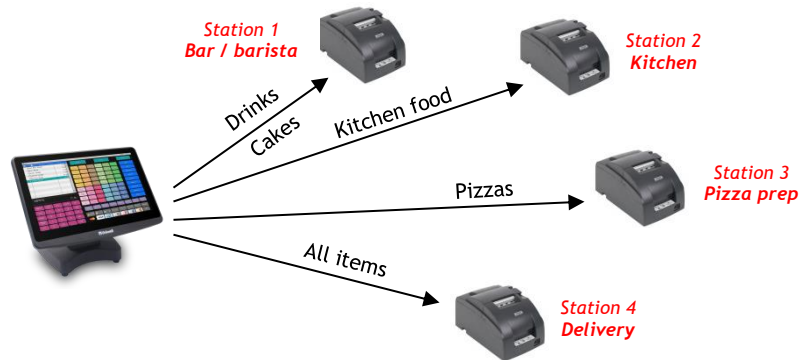


Topic: KITCHEN PRINTING BASICS

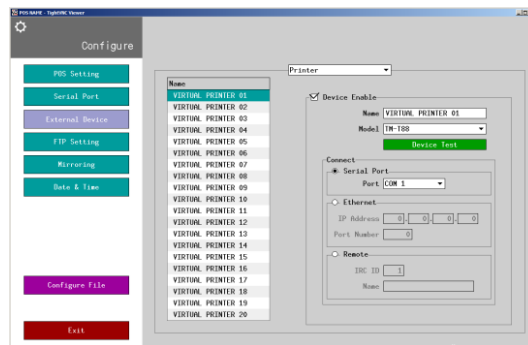
Uniwell HX-series POS terminals have a very powerful set of Kitchen Printing options, providing enhanced flexibility to venues with multiple food and drink production areas. An overview of the initial basic setup of Kitchen Printing includes:

1. Configure the HX to connect to the Printer(s) via COM port, network IP address or through shared printer on another POS
2. Specify 'KP Files' that you want to create and assign them to the Virtual Printers
3. Assign menu items (PLUs) to be sent to the required Kitchen Printers when ordered (using Uniwell Lynx)



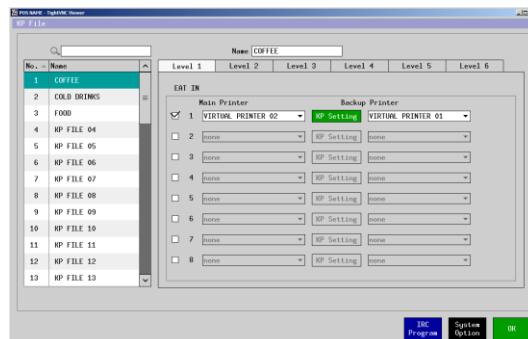
FAQ: Where do I set up the printers to be connected to the POS terminal?

- In the POS, go to **Configure > External Device** – select Printer and connect up to 20 'Virtual Printers'



FAQ: What are KP Files, and where do I program them?

- KP Files are the different sets of items that are to be sent to one or more Kitchen Printers. One KP File can go to multiple printers, and you can send multiple KP Files to one printer... so this feature is extremely flexible.
- In the POS, go to **Program > Print > KP File** – you can create up to 50 different KP Files and select which printers they are to be directed to. Give your KP Files intuitive names. Each selected printer (for each KP File) can have its own KP Settings



FAQ: How do I associate my menu items (PLUs) with the KP Files I have designated?

- In Uniwell Lynx, modify your Items & on the 'General' tab you can select up to two KP Files that the items are to be linked to
- Remember, you can modify multiple items in Uniwell Lynx simultaneously, saving extensive time
- Once your items have been correctly configured, you will need to perform a 'Send Program' of PLUs (from the Communications menu) to the POS terminals

Note: Extensive advanced Kitchen Printing options are available in HX POS terminals. Contact your Uniwell POS support provider for more details.